



THE UNIVERSITY
of NORTH CAROLINA
at CHAPEL HILL

THE DEPARTMENT OF BIOLOGY
THE CAROLINA VEGETATION SURVEY

ROBERT K. PEET
THE CAROLINA VEGETATION SURVEY
DEPARTMENT OF BIOLOGY
COKER HALL, CAMPUS BOX 3280
CHAPEL HILL, NC 27599-3280 USA

PHONE: **919-962-6942**
MOBILE: **919-368-4971**
EMAIL: peet@unc.edu
WEB: <http://cvs.bio.unc.edu>

DATE: May 11, 2013

TO: PULSE-2013 Participants

FROM: The Carolina Vegetation Survey

SUBJECT: AN INVITATION!! – Join us for the 26th annual Pulse. This year we shall be studying the vegetation of the central Piedmont.

The Carolina Vegetation Survey cordially invites you to attend PULSE-2013, the 26th Annual Carolina Vegetation Survey Field Foray. To our many friends from past pulse events, we extend our thanks for your support and invite you to work with us again. To those who have not attended a Pulse, we hope you'll consider joining us for the first time this year.

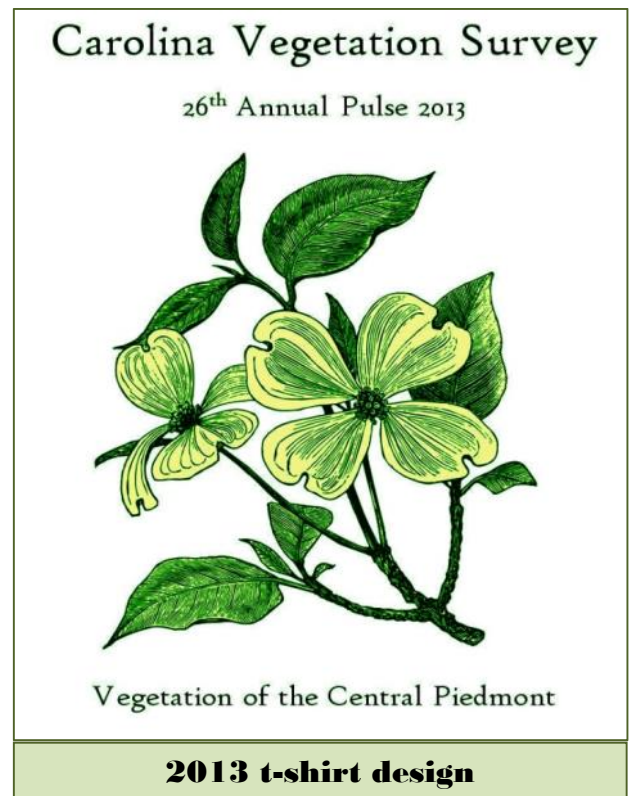
As hard as it is to believe, this will be the **26th year of pulse** – we have been at this for over a quarter century! Through PULSE events and other initiatives we have been able to accumulate over **9000 high-quality vegetation plots**, an achievement that has involved the **contributions of over 1000 different persons**. This year we will work at filling the most conspicuous hole apparent on the map of past plots. Details follow below.

PULSE 2013A: May 16-19

The first Pulse event of 2013, PULSE-2013A, will be held **May 16 – 19** in the vicinity of the North Carolina Zoo. We have arranged complementary lodging for participants at Woodfield Boy Scout Camp for the nights of May 15 – May 18.

PULSE 2013B: July 13-19

The second Pulse event of 2013, PULSE-2013B, will be held **July 13 – 19** in the central Piedmont of North Carolina. We have arranged complimentary lodging for participants at Davidson College in Davidson, NC for the nights of July 12 – July 16. We will move to a new location for the 17 and 18. We will announce later the location of lodging for the nights of July 17 & 18.



WHAT IS PULSE?

For those of you not familiar with the Pulse events, each year the Carolina Vegetation Survey organizes one or more group efforts to study intensively the vegetation of some natural region within North and/or South Carolina. All persons interested in vegetation and/or field botany are invited to participate for as many days as is convenient. Any level of experience is appropriate; the only requirement is that you bring your enthusiasm for field work. The annual "Pulses" of the CVS have become established as special events for those interested in the natural history of the Carolinas. We sample a wide variety of natural communities in areas well known for their biological diversity. Many of these areas are not readily accessible without special arrangements with landowners/managers. This is an ideal way to see new and exciting areas, meet others interested in botany and ecology, and to share knowledge and experience. (Descriptions of past Pulses have ranged from "Boot Camp for Botanists" to "Woodstock for Botanists" to "Extreme Botany".)

References:

- 1) <http://cvs.bio.unc.edu/pulses.htm> (general information)
- 2) <http://cvs.bio.unc.edu/press.htm> (press coverage)
- 3) <http://cvs.bio.unc.edu/pulse/PulsePix.pdf> (photos)
- 4) <http://cvs.bio.unc.edu/PULSE2006-9.ppt> (slide show; large file)

GOALS FOR PULSE2013

Pulse 2012 has a two-fold mission. The first mission is to sample broad-ranging community types across the target area of the central Piedmont of North Carolina, an area that we have heretofore neglected owing to the modest amount of public land. The second is to capture plots on representative examples of unusual vegetation types of the Piedmont that are underrepresented in our database. You can expect us to visit the full range of Piedmont types from acidic to basic and xeric to mesic oak-hickory forests, mixed mesic hardwood forests, basic mesic hardwood forests, xeric hardpan forests, Piedmont monadnock forests, Piedmont heath bluffs, and acidic glades and cliffs. **If you have nominations of particular places we should visit, please send them our way.**

REGISTRATION

Although our accommodations allow us some flexibility in the number of people staying with us, we would appreciate you contacting Bob Peet (peet@unc.edu, 919-962-6942) or Brenda Wichmann (brenda.wichmann@gmail.com; 919-636-0603) in advance to let us know of your plans. **Notifying us of your plans will also help us with advance planning for teams. In particular, please inform us of your arrival date (AM, PM), anticipated work days, and departure date (AM, PM).** However, do not let failure to notify us keep you from participating. We will be happy to have you participate, even if you do not get around to indicating your interest in advance.

THE DETAILS: LODGING, MEALS, AND OTHER CONSIDERATIONS

There is no charge to you for use of our accommodations. Those wishing to participate in this Pulse may begin working with us on any day and stay as long as desired (any number of days). The best plan would be to arrive the night before the first day you plan to work. If you prefer to join us in the morning, **please be ready to leave for the field from the base camp no later than 7:30 AM** on the morning you wish to start. We do not have overnight facilities rented for the nights following the last field day of either pulse.

Individuals are responsible for their own meals. At Camp Woodfield there will be a kitchen associated with our building, but there will be no kitchen facilities at Davidson College. We will typically eat breakfast in our rooms at the dorms, and leave promptly for the field each morning. We'll take our field lunches with us (bring plenty to drink), and then eat out for dinner.

You must come prepared to make up your own bed. A light sleeping bag would be a simple solution, or you can bring your own linens. **Don't forget towels, pillow, pillowcase, toiletries, etc. It would be wise to bring a pad in case we run out of beds**, though we hope that this does not happen.

We will adhere to standard rules of conduct as we will be staying at educational facilities (e.g., illegal conduct, illegal substances, weapons of any kind, and public nudity are not permitted). There will be no smoking in any building. Candles or other open flames are prohibited in any building. On the other hand, it is perfectly acceptable, and even encouraged, to stay up to late hours collaboratively identifying plant fragments brought back from the field.

ACCOMMODATIONS FOR PULSE-2013A (MAY) – Camp Woodfield

We will stay in Long House on the Woodfield Scout Preservation Camp.

Please see maps at the end of this document!

Traveling East on Highway 64 (from Charlotte).

From the intersection of Interstate 85 and NC Highway 64, go approximately 13.2 miles and turn right (south) on Tabernacle School Rd. Go 0.7 mi to the Camp Entrance and turn left (south) on Woodfield Scout Trail. Go 0.3 mi. and take the first left, continue past the fort (on the left) and turn right on Sourwood. Go about 0.15 mi to the parking lot on the right. Long House is located just downhill from the parking lot.

Traveling West on Highway 64 (from Asheboro).

From the intersection of NC Highway 220 and NC Highway 64, go approximately 8.4 miles and turn left (south) on Tabernacle School Rd. Go 0.7 mi to the Camp Entrance and turn left (south) on Woodfield Scout Trail. Go 0.3 mi. and take the first left, continue past the fort (on the left) and turn right on Sourwood. Go about 0.15 mi to parking lot on the right. Long House is located just downhill from the parking lot.

ACCOMMODATIONS FOR PULSE-2013B (JULY) –Davidson College

Details will be announced in early June.

CVS CONTACTS

Website: <http://cvs.bio.unc.edu/>

Robert K. Peet

Department of Biology, CB#3280
University of North Carolina
Chapel Hill, NC 27599-3280
phone: (919) 962-6942
cell: (919) 368-4971
peet@unc.edu

Alan S. Weakley

UNC Herbarium, CB#3280
North Carolina Botanical Garden
Chapel Hill, NC 27599-3280
phone: (919) 962-0578
cell: (919) 619-1101
weakley@unc.edu

Michael P. Schafale

NC Natural Heritage Program
Green Square DENR Building
1601 Mail Service Center
Raleigh, NC 27699-1601
phone: (919) 707-8627
cell: (919) 218-3547
Michael.Schafale@ncdenr.gov

Thomas R. Wentworth

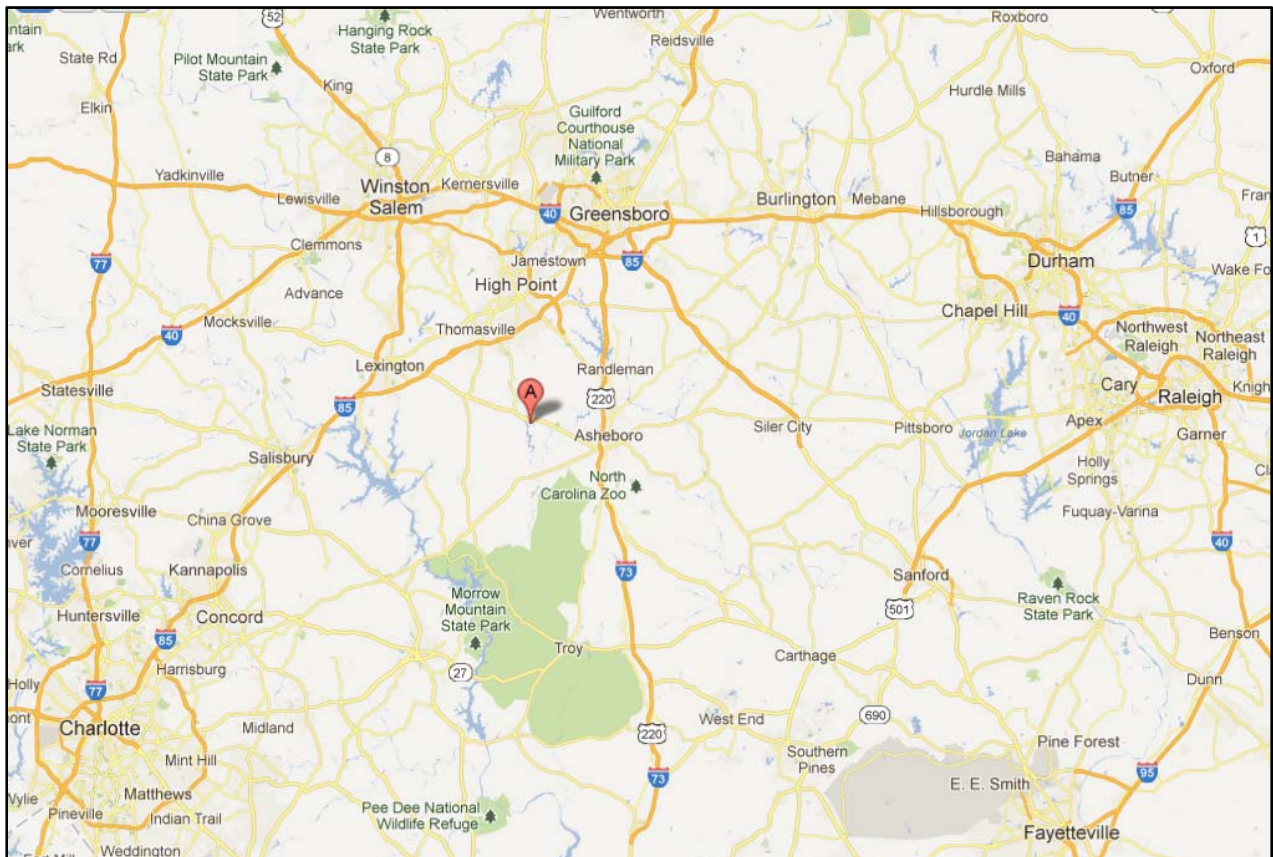
Department of Botany, Box 7612
NC State University
Raleigh, NC 27695-7612
phone: (919) 515-2168
cell: (919) 605-6116
tom_wentworth@ncsu.edu

SAFETY AND PARTICIPATION GUIDELINES

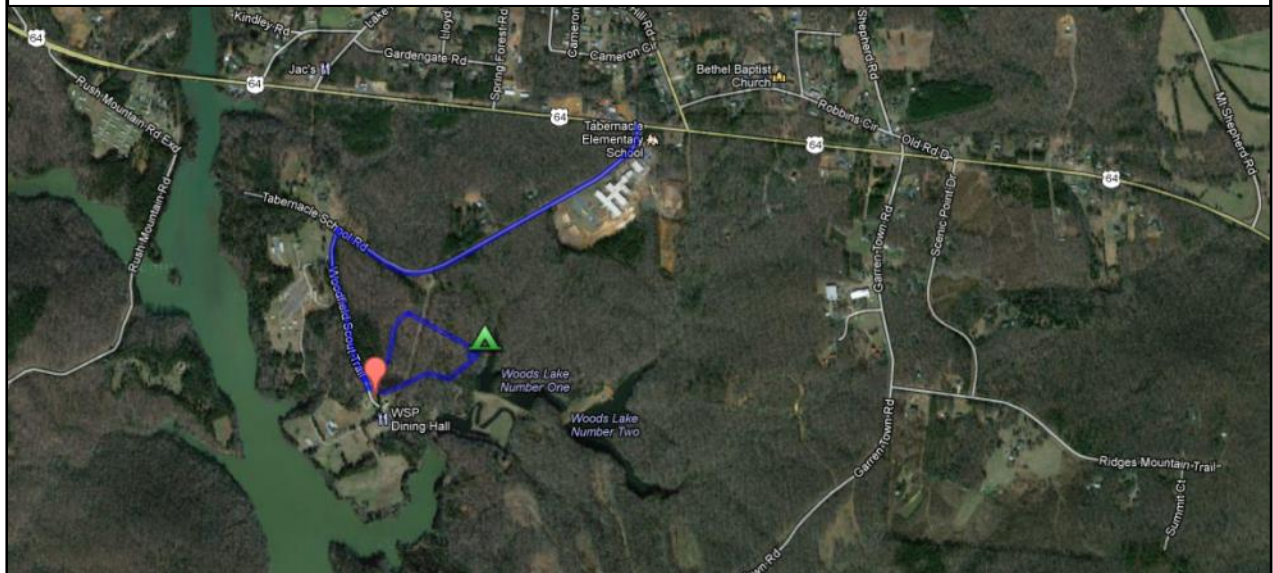
The Pulse events have an excellent safety record, and we ask your assistance in our efforts to make PULSE-2013 safe for all participants. If you are unfamiliar with hazards associated with field work, please consult with one of the coordinators. As you plan for PULSE-2013, please keep in mind the conditions we will experience. The weather this time of year in the Carolinas is generally quite warm, and rainfall may be plentiful. Please equip yourself accordingly. A daypack with the basics for fieldwork is a necessity. Keep in mind that we typically eat lunch in the field, so plan to bring lots to drink and a bag lunch. Ticks and chiggers are generally a problem during the warmer months in the Carolinas. We recommend that you come equipped with a roll of duct tape for sealing pants legs to boots, if needed. Also bring whatever insect repellent/killer you prefer to use (100% DEET products are good repellents).

Pulse includes intensive field work in small groups of 3-5 persons. It is important that all participants share the spirit of collegial inquiry and discovery, that individuals respect the rights and feelings of others, and that all data be recorded as accurately and completely as possible. Participants who are concerned about activities or performance of other participants should immediately report such concerns to one of the organizers. The organizers reserve the right to limit the level of participation of any individual so as to assure the overall well being of the other participants and the quality of the data acquired. Participants should understand that participation in the Pulse events is voluntary and may involve risks including but not limited to motor vehicle accidents and other potential personal injuries and property damage. Participants must assume responsibility for all risks. Further, participants must indemnify and hold harmless the coordinators of the pulse events and their employers from any liability arising from or proximately caused by participation. You will be asked to sign a liability waiver before participating in PULSE-2013.

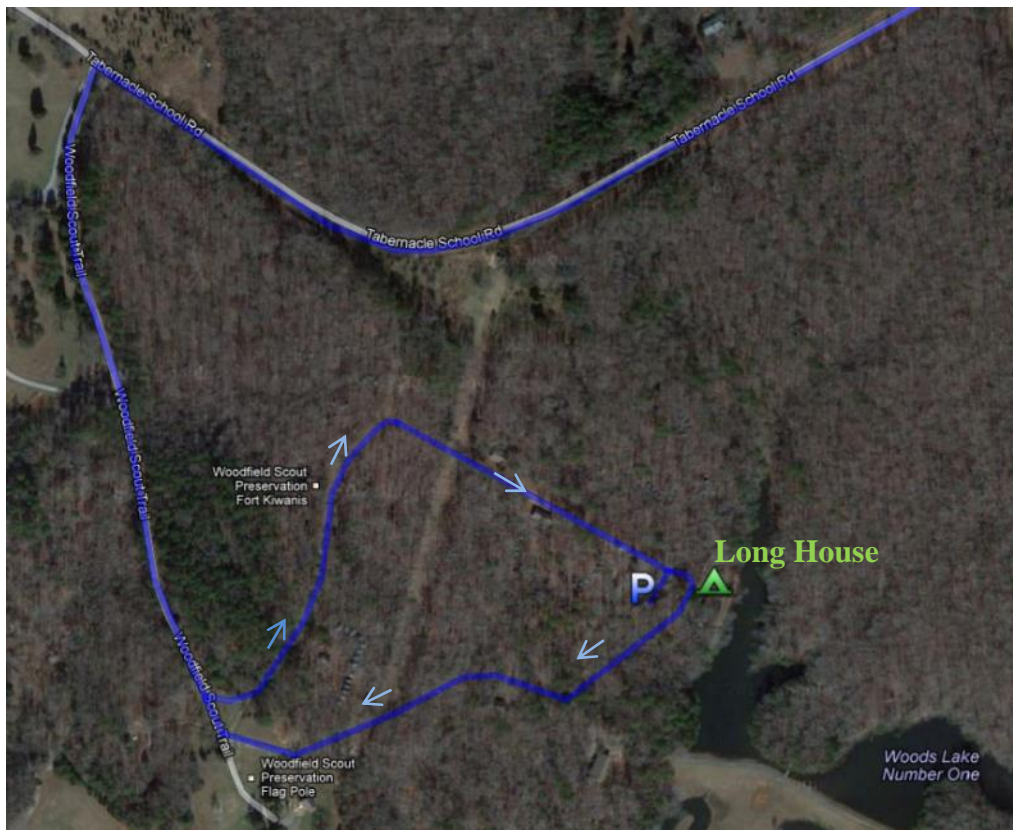
Location of lodging for Pulse 2013A: Nights of May 15-18.



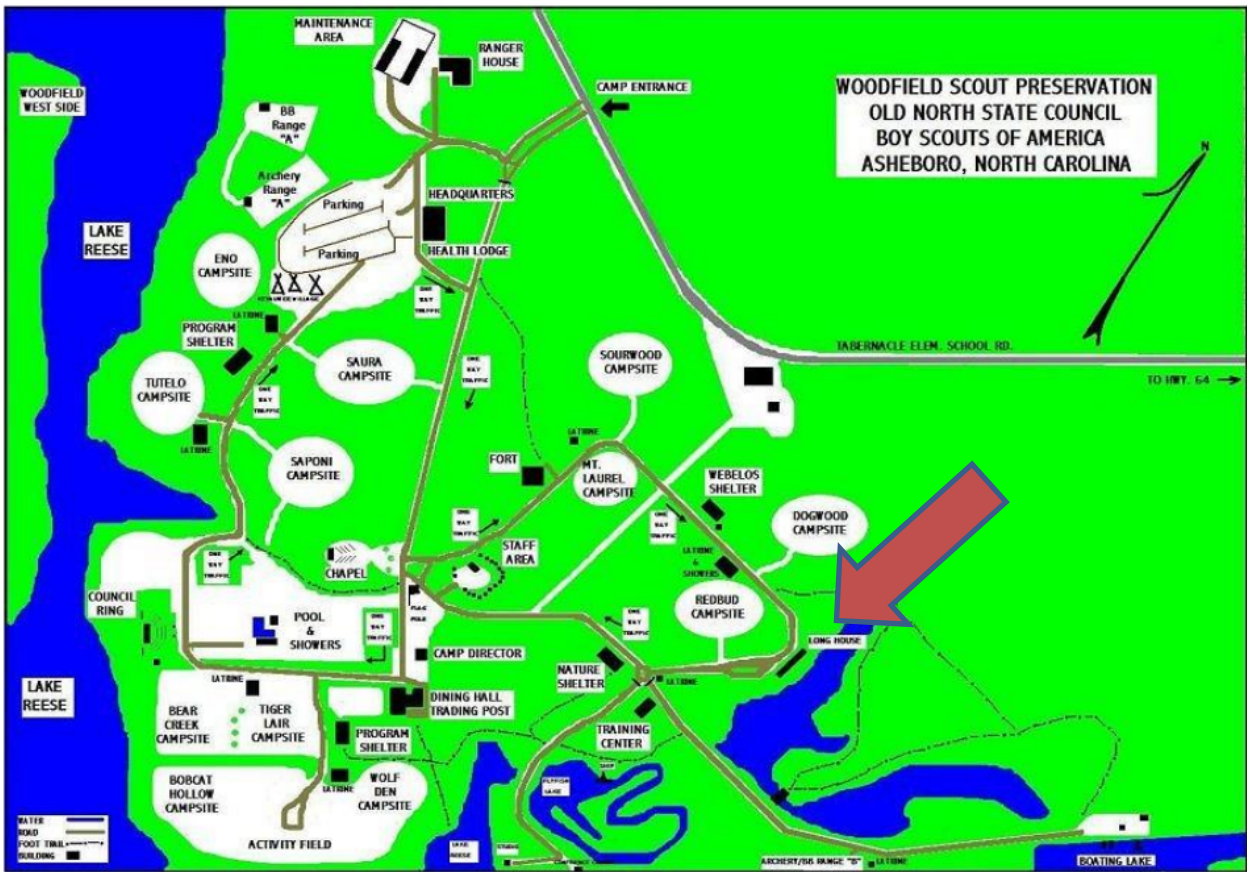
Location of Woodfield Scout Preservation Camp relative to major cities of North Carolina.



Location of Woodfield Scout Preservation Camp relative to NC Highway 64.



Location of Long House at Woodfield Scout Preservation Camp.



Map of Woodfield Scout Preservation Camp.