



THE UNIVERSITY
of NORTH CAROLINA
at CHAPEL HILL

THE DEPARTMENT OF BIOLOGY
THE CAROLINA VEGETATION SURVEY

M. FORBES BOYLE, PROJECT MANAGER
THE CAROLINA VEGETATION SURVEY
DEPARTMENT OF BIOLOGY
COKER HALL, CAMPUS BOX 3280
CHAPEL HILL, NC 27599-3275 USA

PHONE: 919-962-6934
FAX: 919-962-6930
EMAIL: mboyle@unc.edu

DATE: 26 May 2010

TO: PULSE-2010B Participants

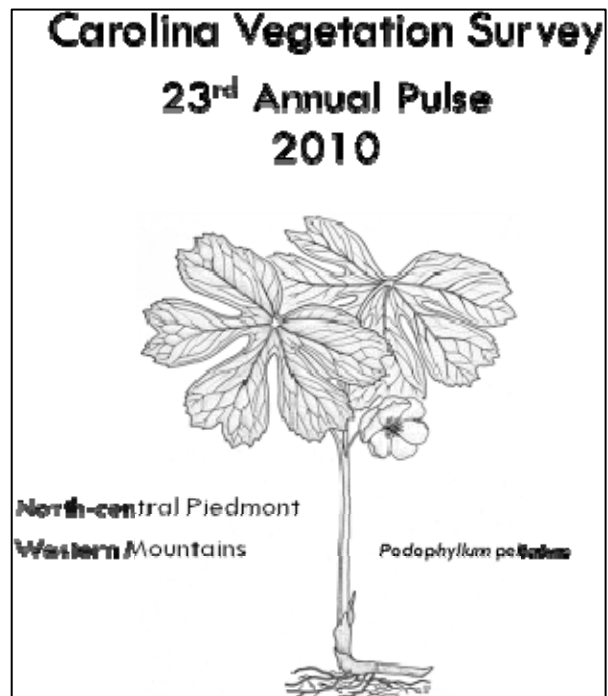
FROM: The Carolina Vegetation Survey

SUBJECT: AN INVITATION!

The Carolina Vegetation Survey cordially invites you to attend PULSE-2010B, the 23rd Annual Carolina Vegetation Survey Field Foray. To our many friends from past pulse events, we extend our thanks for your support and invite you to work with us again. To those who have not attended a Pulse, we hope you'll consider joining us for the first time this year. In either case, please read on...

WHAT WE DID AT PULSE 2009A!

Earlier this month, the Carolina Vegetation Survey hosted its first Pulse of 2010 along the central-northern tier counties of North Carolina. A total of 49 plots were established during the week-long field foray. We sampled a wide variety of community types from western Rockingham to northern Vance Counties, including dry-mesic oak - hickory forests, xeric and mesic hardpan forests, chestnut oak forests, mesic mixed hardwood forests, Piedmont alluvial forests, and basic bluff glades. We also were able to access some interesting community types over gabbro formations in north-western Granville County. We anticipate completing a first cut at plot classification to community type in the upcoming weeks. As always, this information will be available on the Pulse website (<http://cvs.bio.unc.edu/pulses.htm>). Also, I will also be posting some pictures of the past Pulse on our Facebook page, so if you haven't become a fan, now is the time!



Please note: This is the **FINAL** Pulse event of 2010. This invitation covers in detail this final **event** only.

1. The second Pulse event, PULSE2010B, will be held **June 13-June 20 throughout North Carolina's undersampled western mountains**. We will focus our efforts during the first half of the event in the vicinity of Madison and northern Buncombe Counties; we have arranged lodging (June 12PM-June 16AM) at Mars Hill College, in Mars Hill, NC. During the second half of the event, we will focus our efforts in Cherokee County; we have arranged lodging at Peace Valley Campground, in Marble, NC (between Murphy and Andrews, NC) (June 16PM-June 20AM). Details explained below.

WHAT IS PULSE?

For those of you not familiar with the Pulse events, each year the Carolina Vegetation Survey organizes one or more group efforts to study intensively the vegetation of some natural region within North and/or South Carolina. All persons interested in vegetation and/or field botany are invited to participate for as many days as is convenient. Any level of experience is appropriate; the only requirement is that you bring your enthusiasm for field work. The annual "Pulses" of the CVS have become established as special events for those interested in the natural history of the Carolinas. We sample a wide variety of natural communities in areas well known for their biological diversity. Many of these areas are not readily accessible without special arrangements with landowners/managers. This is an ideal way to see new and exciting areas, meet others interested in botany and ecology, and to share knowledge and experience. (Descriptions of past Pulses have ranged from "Boot Camp for Botanists" to "Woodstock for Botanists" to "Extreme Botany".)

References:

- 1) <http://cvs.bio.unc.edu/press.htm> (press coverage)
- 2) <http://cvs.bio.unc.edu/pulse/PulsePix.pdf> (photos)
- 3) <http://cvs.bio.unc.edu/PULSE2006-9.ppt> (slide show)
- 4) <http://cvs.bio.unc.edu/pulses.htm> (general info.)

PULSE 2010B

Pulse 2010B has a two-fold mission. The first mission is to focus our efforts on sampling within broad-ranging community types (dry-mesic oak-hickory forests, acidic and rich cove forests) that have poor representation in our dataset in these TWO sections of North Carolina Mountains-- Madison County and Cherokee County. The second mission is to focus on unique areas that may only be found in the regions we're working in. Our sampling range for the first half of the event will include the majority of Madison County, northeastern Haywood County, northern Buncombe County, and western Yancey County. On June 16, our travel day, we will sample within the vicinity of Bryson City, in route between Mars Hill and Cherokee County. During the second half of the event, we will sample throughout Cherokee County, and portions of western Clay County.

We have rented facilities at Mars Hill College for the first half of the event (<http://www.mhc.edu>) **The dates we will be working out of Mars Hill are Saturday PM, June 12 through Wednesday AM, June 16. Our first work day will be Sunday, June 13!!**

For the second half of the event, we have rented facilities at the Peace Valley Campground in Marble, NC (between Andrews and Murphy). **The dates will be working out of Marble are Wednesday PM, June 16 through Sunday AM, June 20. Our first work day from Marble will be Thursday, June 17!!**

We will sample between Mars Hill and Marble on our travel day, June 16!

We anticipate visiting a broad range of vegetation types. You can expect montane glades, redcedar-hardwood woodlands, heath balds, high-elevation red oak forests, chestnut oak forests, montane oak-hickory forests, rich and acidic coves, shale slope woodlands, low elevation xeric pine forests, montane alluvial forests and many, many others. **If you have nominations of particular places we should visit, please send them our way.**

SCHEDULE

Pulse Day / Lodging Summary:

| | Sat-June 12 | Sun-June 13 | Mon-June 14 | Tue-June 15 | Wed-June 16 | Thu-June 17 | Fri-June 18 | Sat-June 19 | Sun-June 20 |
|------------------|-------------------|-------------------|-------------------|-------------------|-------------------------|-------------------------|-------------------------|-------------------------|--------------------|
| Lodging PM | Mars Hill College | Mars Hill College | Mars Hill College | Mars Hill College | Peace Valley Campground | Peace Valley Campground | Peace Valley Campground | Peace Valley Campground | No lodging |
| Pulse Day-Region | | Day 1- Madison Co | Day 2- Madison Co | Day 3- Madison Co | Day 4-Travel Day | Day 5- Cherokee Co | Day 6- Cherokee Co | Day 7- Cherokee Co | Day 8- Cherokee Co |

Our Pulse base camp for the first four days will be **Edna Moore Hall** on the campus of Mars Hill College in Mars Hill, NC. We have reserved rooms from the night of Saturday, June 12 through the morning of Wednesday, June 16. During the second half of the event, we will be relocating to the Peace Valley Campground in Marble, NC. We have reserved rooms here from the night of Wednesday, June 16 through the morning of Sunday, June 20. There is no charge to you for use of these accommodations. Those wishing to participate in this Pulse may begin working with us on any day and stay as long as desired (any length of time from one day to the full eight days). **Our first day in the field will be Sunday, June 13.** The best plan would be to arrive the night before the first day you plan to work. For those of you interested in joining us for the first day of field work, our first night at Mars Hill College base camp will be Saturday, June 12. If you prefer to join us in the morning, please be ready to leave for the field from the base camp no later than 7:30 AM on the morning you wish to start. Our last scheduled day in the field will be Sunday, June 20, but we do not have overnight facilities rented for that night.

REGISTRATION

Although our accommodations allow us some flexibility in the number of people staying with us, we would appreciate you contacting Forbes Boyle (mboyle@unc.edu, 919-265-7505), Bob Peet (peet@unc.edu, 919-962-6942) or Tom Wentworth (tom_wentworth@ncsu.edu, 919-515-2168) in advance of the Pulse to let us know of your plans. Notifying us of your plans will also help us with advance planning for teams. **Please inform us not only the days you wish to Pulse, but also the nights which you need lodging!**

THE DETAILS: LODGING, MEALS, AND OTHER CONSIDERATIONS

Individuals are responsible for their own meals. We will **NOT** have access to full kitchen facilities nor refrigeration at Mars Hill College. You may wish to bring a personal cooler to keep food from spoiling. We **WILL** have access to a full kitchen and refrigeration at Peace Valley Campground.

We'll eat breakfast at the dorms/camp, and leave promptly for the field each morning. We'll take our field lunches with us (bring plenty to drink), and then typically eat out for dinner, although those wishing to prepare their own dinner meals at Peace Valley Campground site are welcome to do so.

You must come prepared to make up your own bed. A light sleeping bag would be a simple solution, or you can bring your own linens. Don't forget towels, pillow, pillowcase, toiletries, etc. Tent camping is welcome at the Peace Valley Campground, but not at Mars Hill College.

We will adhere to standard rules of conduct and state park rules (e.g., illegal conduct, illegal substances, weapons of any kind, and public nudity are not permitted). No smoking in any building (smokers are responsible for ashes and butts outdoors). Candles or other open flames are prohibited in any building. On the other hand, it is perfectly acceptable, and even encouraged, to stay up to late hours collaboratively identifying plant fragments brought back from the field.

DIRECTIONS TO MARS HILL COLLEGE (map = <http://tiny.cc/vzld0>)

Mars Hill College (<http://www.mhc.edu/>)

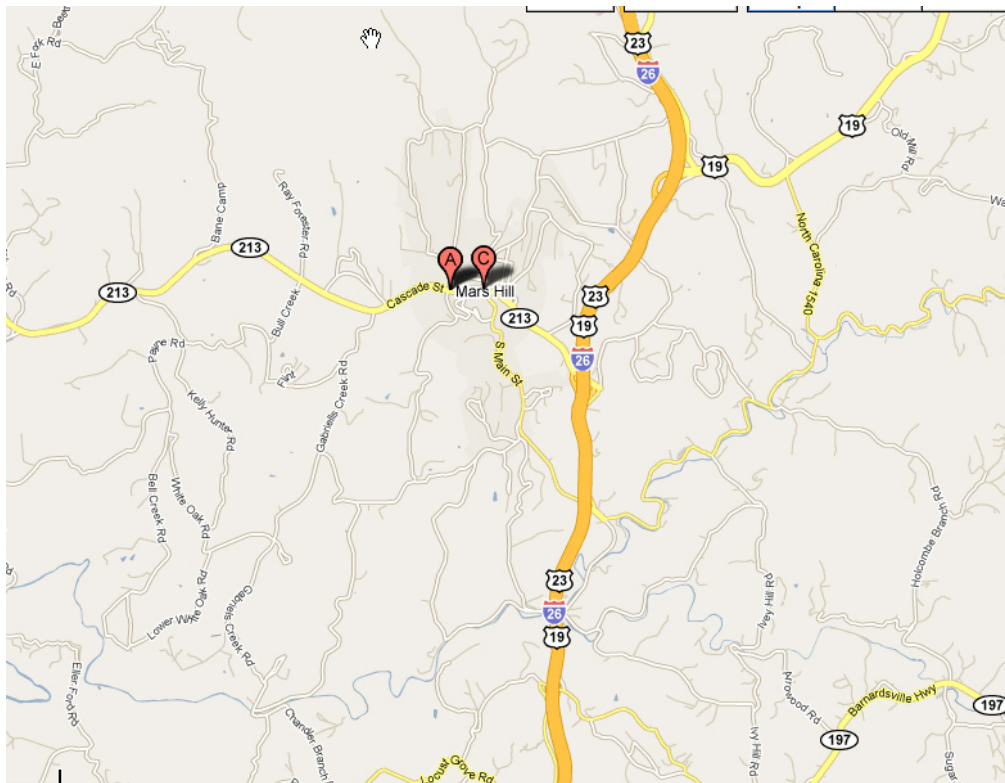
(Address: 100 Athletic St. Mars Hill, NC 28754; Office Phone: 828-689-1307)

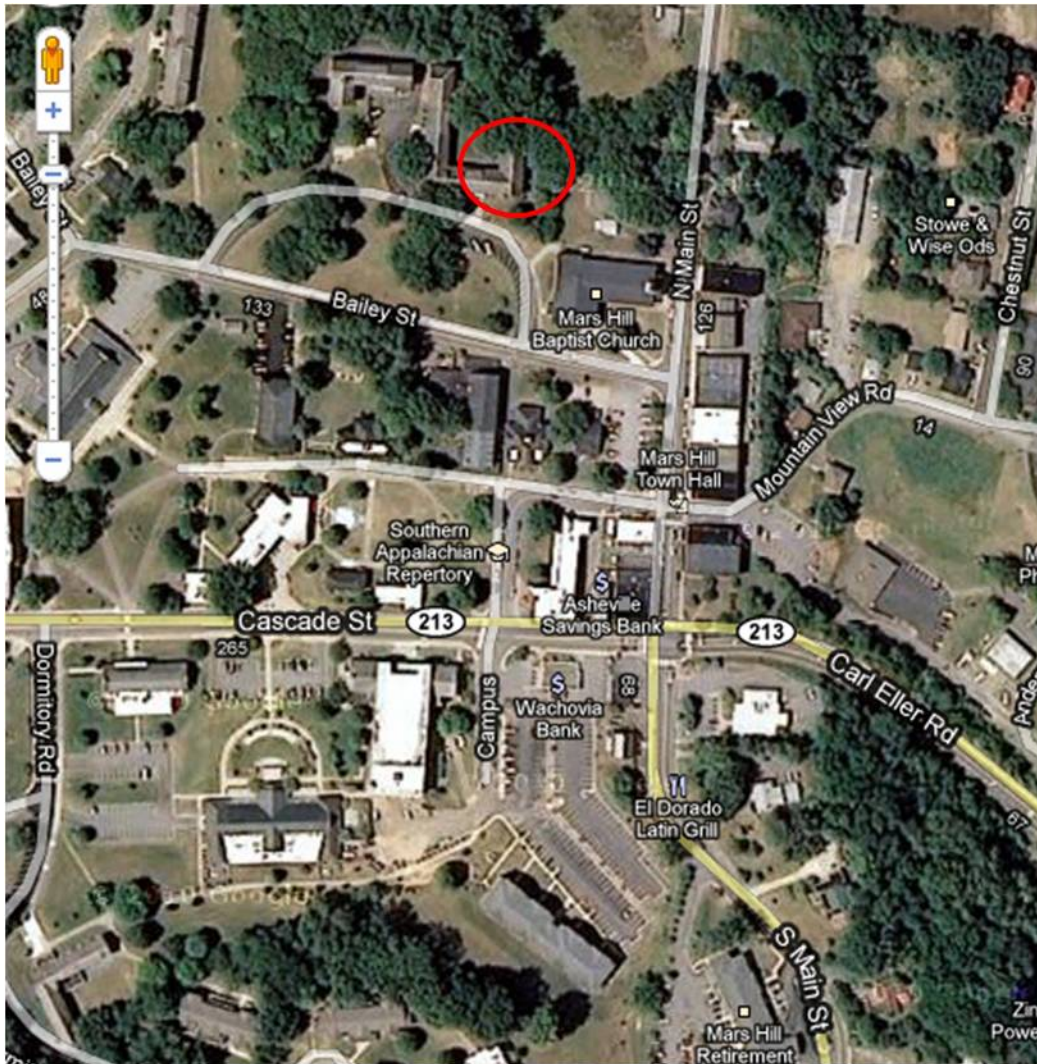
From Asheville:

- Take Highway 19-23 (Future Interstate 26) north approximately 18 miles to Mars Hill.
- Take Exit 11 and turn left off the on-ramp onto NC Hwy 213/Carl Eller Road.
- Travel approximately 1 mile onto the campus of Mars Hill College.

From Johnson City:

- Take Interstate 26 south approximately 42 miles to Mars Hill. (At the North Carolina line, Interstate 26 becomes Hwy 19-23/Future I-26).
- Take Exit 11 and turn left off the on-ramp onto NC Hwy 213/Carl Eller Road.
- Travel approximately 1 mile onto the campus of Mars Hill College.





Google image of Mars Hill College, Edna Moore Hall in red.

DIRECTIONS TO PEACE VALLEY CAMPGROUND (map = <http://tiny.cc/01spo>)

Peace Valley Campground (www.peacevalleycampground.com)

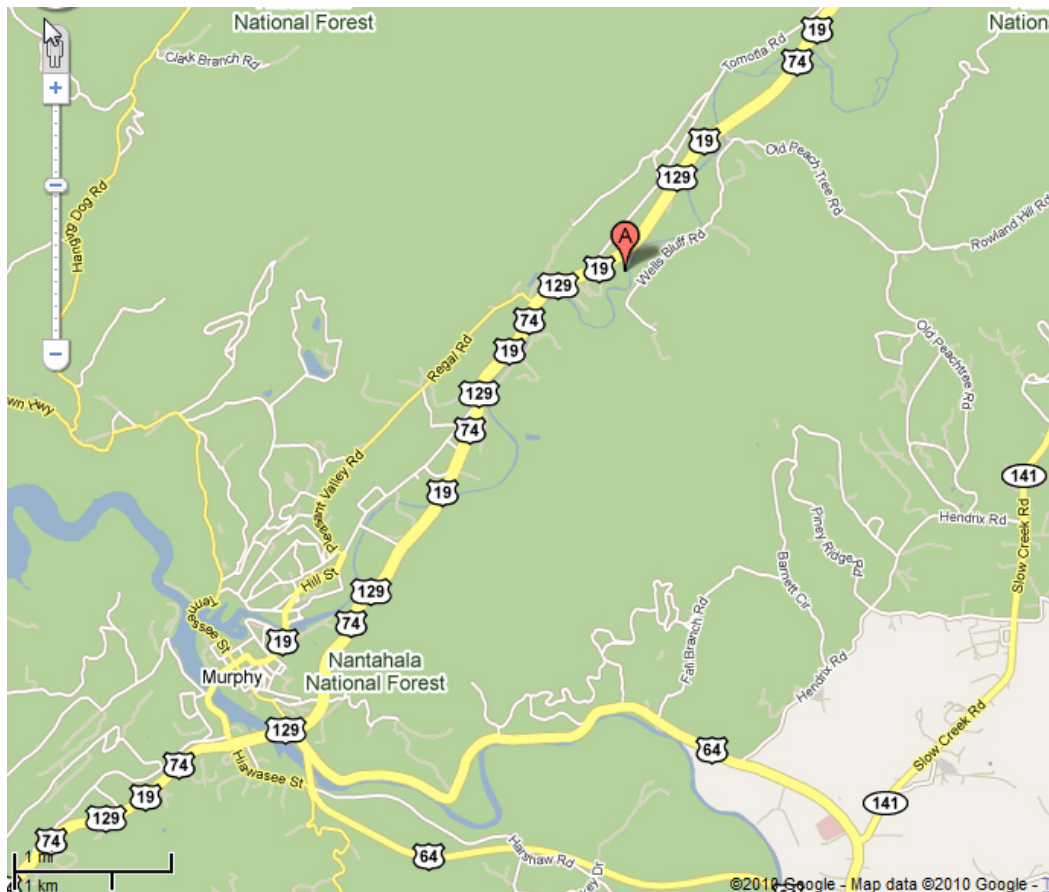
(Address: 117 Happy Valley Rd., Marble, NC 28905; Office Phone: 828-837-6223)

From Andrews:

- Take Highway 19/74/129 south approximately 8 miles to Happy Valley Road, turn left (south).
- If you see Tomotla Road on the right (north) of the Highway, you've gone too far.
- Happy Valley Road will lead you to the campsite.

From Murphy:

- Highway 19/74/129 north approximately 4 miles to Happy Valley Road, turn right (south) just past Tomotla Road.
- Happy Valley Road will lead you to the campsite.





Google image of Peace Valley Campground, Club Meeting Room in yellow.

CVS CONTACTS

Website: <http://cvs.bio.unc.edu/>

M. Forbes Boyle

Department of Biology, CB#3280
University of North Carolina
Chapel Hill, NC 27599-3280
phone: (919) 962-6934
cell: (919) 265-7505
mboyle@unc.edu

Thomas R. Wentworth

Department of Botany, Box 7612
NC State University
Raleigh, NC 27695-7612
phone: (919) 515-2168
cell: (919) 605 6116
tom_wentworth@ncsu.edu

Robert K. Peet

Department of Biology, CB#3280
University of North Carolina
Chapel Hill, NC 27599-3280
phone: (919) 962-6942
cell: (919) 368-4971
peet@unc.edu

SAFETY AND PARTICIPATION GUIDELINES

The Pulse events have an excellent safety record, and we ask your assistance in our efforts to make PULSE2010 safe for all participants. If you are unfamiliar with hazards associated with field work, please consult with one of the coordinators. As you plan for PULSE2010, please keep in mind the conditions we will experience. The weather this time of year in the Carolinas is generally quite warm, and rainfall may be plentiful. Please equip yourself accordingly. A daypack with the basics for fieldwork is a necessity. Keep in mind that we typically eat lunch in the field, so plan to bring lots to drink and a bag lunch. Ticks and chiggers are generally a problem during the warmer months in the Carolinas. We recommend that you come equipped with a roll of duct tape for sealing pants legs to boots, if needed. Also bring whatever insect repellent/killer you prefer to use (100% DEET products are good repellents).

Pulse includes intensive field work in small groups of 3-5 persons. It is important that all participants share the spirit of collegial inquiry and discovery, that individuals respect the rights and feelings of others, and that all data be recorded as accurately and completely as possible. Participants who are concerned about activities or performance of other participants should immediately report such concerns to one of the organizers. The organizers reserve the right to limit the level of participation of any individual so as to assure the overall well being of the other participants and the quality of the data acquired. Participants should understand that participation in the Pulse events is voluntary and may involve risks including but not limited to motor vehicle accidents and other potential personal injuries and property damage. Participants must assume responsibility for all risks. Further, participants must indemnify and hold harmless the coordinators of the pulse events and their employers from any liability arising from or proximately caused by participation. You will be asked to sign a liability waiver before participating in PULSE2010.